

STEINER



MASSIVE INVENTORY TO CHOOSE FROM

Steiner carries the brands you know and trust to get the job done right. We are constantly adding more of the products you depend on.

Visit us at steinerelectric.com or download our app to see the latest additions to our product line.

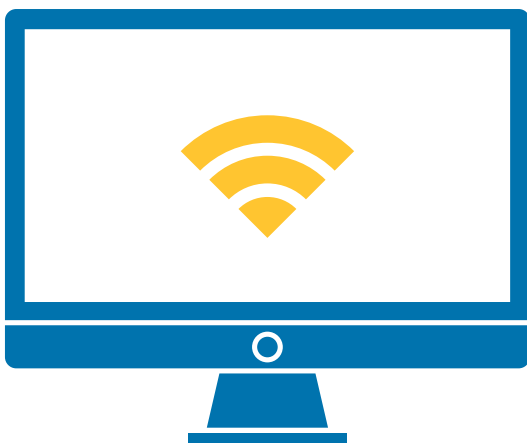


SPECIAL DELIVERY AVAILABLE

Need a part, and need it fast? Give us a call to discuss how quickly we can get the part from our dock to your door.

WE HAVE AN APP FOR THAT

Available for Android and iPhone, Steiner's mobile app lets you check product availability, and submit your order on the go.



CHECK OUT OUR WEBSITE

- Electronic inventory & statements
- Shipping status
- Convenient reorder
- Real time inventory & pricing



CALL 1-800-STEINER OR STOP BY ANY OF OUR 9 CONVENIENT LOCATIONS.

For location details, see back cover.

STEINER'S SELECT:

A Sampling of Some of Steiner's 1,000 Manufacturing Partners

ADJUSTABLE FREQUENCY DRIVES

KB Electronics
Siemens Industry
Square D (Schneider)
Yaskawa

AIR VENTILATORS

Airmaster Fan Company
Broan Mfg. Company
Go Fan Yourself

ANCHORS & FASTENERS

3M Company
Cully/Minerallac
Ideal Industries, Inc.
Mazel & Company
Metallics, Inc.
Thomas & Betts (T&B)

ARC FLASH SAFETY

CIP-Certified Insulated
Products
Oberon Company
Salisbury by Honeywell

BAND SAW BLADES

Amada Machine Tools
Lenox (American Saw
& Mfg.)
Milwaukee Electric
Tool Corp.
Wikus Saw Technology

CABLE BENDERS & PULLERS

Gardner Bender
Greenlee (Textron)
Southwire Company
(Maxis)

CABLE: COAX, COPPER DATA, FIBER OPTIC, ELECTRONIC, & VOICE

Coleman Cable Systems
Genesis Cable Systems

Hitachi Cable
Mohawk

CABLE REEL JACKS & LIFTS

Condux (Jackson Tool)
Duff-Norton Co. (Coffing)

CABLE TRAYS & RUNWAYS

B-Line (Eaton)
Cablofil (Legrand)
Hubbell Premise Wiring
Thomas & Betts (T&B)

CONDUIT, FITTINGS & BOXES

Adalet
Appleton (Emerson)
Arlington Industries
Blackburn (T&B)
Bridgeport Fittings, Inc.
Cal Pipe Mfg.
Cantex, Inc.
Carlton Electrical Products
Electri-Flex Company
Erico Electrical Products
Garvin Industries, Inc.
Kellems (Hubbell)
Killark (Hubbell)
Mulberry Metal
Products, Inc.
Myers Electric
Products, Inc.
O-Z/Gedney (Emerson)
Ocal (Thomas & Betts)
Quazite (Hubbell)
Red Dot (T&B)
Republic Conduit
Steel City (T&B)
Wheatland Tube Company

CORD GRIPS

Appleton (Emerson)
Bridgeport Fittings, Inc.
Hubbell Wiring Devices

Kellems (Hubbell)
Olflex Wire & Cable, Inc.
(Lapp USA, Inc.)
Pyle National (Amphenol)
Remke Industries, Inc.
Thomas & Betts (T&B)
Woodhead (Molex)

CORD/HOSE REELS

Appleton (Emerson)
Gleason Reel Corp.
(Hubbell)
McGill (Emerson)

CORDSETS/JUNCTION BLOCKS

Brad (Molex)
Siemens Industry
Turck

EMERGENCY/EXIT LIGHTING

Alkco (Philips)
Big Beam Emergency
Systems
Bodine Electric Co.
Chloride Systems (Philips)
Dual-Lite, Inc.
Emergi-Lite, Inc.
Exide Safety Systems Div.
Exitronix Barron
Hubbell Lighting
Lightalarms (T&B)
Lithonia Lighting
National Power
Prescolite (Hubbell)
Sure-Lite (Cooper)
Western Lighting
Zeus Battery

ENCLOSURES: NEMA-1-12- JIC EXPLOSION PROOF & WEATHERPROOF

Adalet
Appleton (Emerson)

Carlton Electrical Products
(T&B)
Hammond Mfg.
Hoffman (Pentair)
Killark (Hubbell)
Mulberry Metal
Products, Inc.
O-Z/Gedney (Emerson)
Quazite (Hubbell)
Red Dot (T&B)

ENCODERS & TACHOMETERS

Baldor Electric Company
Siemens Industry
Turck

LIGHTING FIXTURES & CONTROLS

3 Form Lighting Art
Access Lighting Inc.
Acclaim Lighting
AFX Lighting
(American Fluorescent)
A-Light/Amerillum
American Electric Lighting
American Green Lights
American Lighting Corp.
(T&B)
American Litepole
American Nail Plate
Amerlux
Ameron Pole Products
Ametrix (Cooper)
Amico
Antique Street Lamps Inc.
Appleton (Emerson)
Architectural Area Lighting
(Hubbell)
Architectural Lighting
Works
Artemide Inc.
Atlantic Lighting Inc.
Atlas Lighting
Axis Lighting

STEINER'S SELECT

Bartco Lighting	Flextronics Illumination	Light Efficient Design LLC	Probuilt Professional
Baselite Corp.	Fluxwerx Illuminations Inc.	Lightalarms (T&B)	Lighting, LLC
Beacon Products, Inc.	Focal Point Inc.	Lighting Services Inc.	Progress Lighting
Bega	FSC Lighting	Lighting Solutions	(Hubbell)
Beghellis USA	Gammalux Systems	Lightnet Arch Lighting	Prudential Lighting
Besa Lighting	Gardco (Philips)	Lightolier	Quattro Lighting Inc.
Birchwood Lighting	General Electric Lighting	Litecontrol Corporation	RAB Lighting
B-K Lighting, Inc.	Generation Brands, LLC	Lithonia Lighting	Radionic Hitech, Inc.
Chicago Spotlight, Inc.	GM Lighting LLC	Louis Poulsen Lighting	Rambusch
Chloride Systems (Philips)	Gripple Inc.	Louvers International	Remphos Technologies
Columbia Lighting	GTF Lighting Assoc. Inc.	LSI Industries Inc.	LLC
(Hubbell)	Hadco Lighting (Philips)	Lucifer Lighting Company	Rig-A-Lite Inc.
Concealite Safety Products	Hapco Aluminum Pole	Lumec (Philips)	RSA Lighting (Cooper)
Con-Tech Lighting	Products	Lumen Art	Satco Products Inc.
Cooper Controls (Eaton)	H.E. Williams, Inc.	Lumenpulse	Scott Architectural
Cooper Lighting Inc.	Hess America	Lumetta Inc.	Sea Gull Lighting
(Eaton)	Hinkley Lighting	Lumiere	Se'Lux Corporation
Cree Inc.	Holophane Corp.	Luminii	Sensor Switch Inc.
Crestron Electronics Inc.	Hubbell Building	Lutron Electronics Co. Inc.	Shakespeare Composite
CSL-Creative Systems	Automation	Manning Lighting	Structures (Valmont)
Lighting	Hubbell Lighting	Mark Architectural Lighting	Spaulding Lighting
Day-Brite Lighting (Philips)	Hubbell Wiring Devices-	Maxlite	(Hubbell)
Deco Lighting	Kellems	McFadden Lighting	Specgrade LED
Delray Lighting Inc.	Hydrel	McGill Electrical (Emerson)	Spectrum Lighting Inc
Delta Lighting Systems, Inc.	Impact Architectural	Mel Northey Co.	SPI Lighting Inc.
Delviro Energy	Lighting LLC	Metalumen Manufacturing	SPJ Lighting
Dialight Corporation	Indy Lighting	Inc.	Spring City Electrical
Dual-Lite Mfg.	Insight Lighting	Millerbernd Mfg. Co.	Square D (Schneider)
Duray Fluorescent Mfg.	Intense Lighting	Moborn Lighting	Sternberg Lanterns, Inc.
Eclipse Lighting, Inc.	Inter-Lux Inc.	Moda Light	Stonco Lighting (Philips)
E-Conolight	Intermatic Inc.	Kurtzon Lighting	Strand Lighting
Ecosense Lighting Inc.	IO Lighting (Cooper)	National Power	Sun Valley Lighting
Edge Lighting LLC	Isolite Corp.	Neo-Ray Lighting Products	Standards
Edison Price Lighting	Janmar	(Cooper)	TCP
Electric Mirror	Jesco Lighting Group	New Star Lighting	Tech Lighting
Electronic Theatre Controls	Juno Lighting Group	Nora Lighting	Teron Lighting
Elite Lighting	Kenall Manufacturing Co.	Nulite	Texas Fluorescents
Elliptipar, Inc.	Kichler Lighting	Orion Energy Systems Inc.	The Sky Factory
Envirobrite	Killark (Hubbell)	Pacific Lighting &	Tivoli, LLC
Energy Solutions	Kim Lighting (Hubbell)	Standards Co.	TMS Lighting Ltd.
International Inc.	Kirlin Co.	Peerless Lighting	Tork Inc. (NSI)
Eureka	Kurt Versen (Hubbell)	Corporation	Truly Green Solutions, Inc.
Evenlite Inc.	LBL Lighting	Philips Luminaires	Union Metal Corporation
Fail-Safe Lighting Systems	LDPI Co.	Philips (Color Kinetic)	United Lighting Standards
(Cooper)	LED Lighting Inc.	Phoenix Products Co.	Inc.
FC Lighting	Ledalite Architectural	Pinnacle Architectural	Universal Lighting
Manufacturing, Inc.	Lumenwerx	Lighting	Technologies
Finelite Inc.	Leotek	Precision Paragon	USA Illumination, Inc.
Flagpoles Inc.	Leviton Manufacturing Co.	Prescolite (Hubbell)	Valmont Industries

STEINER'S SELECT

Vibia
Visa Lighting
Visionaire Lighting
Visual Lighting
Technologies
WJM Poles
Wac Lighting
Waldmann Lighting Co.
Wattstopper (Legrand)
Western Lighting
Wila Lighting
Winona Lighting Studios
Woodhead (Molex)
Zeus Battery
Zumtobel

FLOOR BOXES

Carlson Electrical Products
(T&B)
Hubbell Wiring Devices
Leviton Manufacturing Co.
Steel City (T&B)

FRAMING

80/20® Inc.

FUSES & ACCESSORIES

Bussmann (Eaton)
Littelfuse, Inc.
Marathon Special Products
Siemens Industry

GEAR MOTORS: AC & DC

Baldor Electric Company
Bodine Electric Co.
Leeson Electric Corp.
SEW-Eurodrive
Siemens Industry
WEG Electric

GEAR REDUCERS

Apex Dynamics
Peerless-Winsmith, Inc.

GENERATORS

Kohler Company
We service and rent all makes and models of commercial generators and emergency power systems.

INDUSTRIAL COMPUTERS

Siemens Industry

INNERDUCT

Arco (Dura-Line Corporation)
Endot Industries

METERS & CONTROLS

Red Lion Controls
Siemens Industry

LADDERS

Louisville Ladder Company
Werner Co.

LAMPS & BALLASTS

Advance Transformer Co.
Advanced Micro Lites, Inc.
Eiko Ltd.
Jefferson Electric, Inc.
Ledtronics, Inc.
Lutron Electronics Co., Inc.
Philips Lighting
Shat-R-Shield, Inc.
TCP
Universal Lighting Technologies
Valmont/Power Lighting Products

LOCKOUT/TAGOUT

Brady Corporation
Hubbell Incorporated
Ideal Industries, Inc.
Panduit Corporation

LUGS

Burndy Electrical (FCI)
IlSCO Corporation
NSI Industries, Inc.
Panduit Corporation
Thomas & Betts (T&B)

MACHINE SAFETY

80/20® Inc.
Banner Engineering
Siemens Industry
Square D (Schneider)

MACHINE VISION

Banner Engineering

METERS & MONITORS

Amprobe Instrument
(Fluke Electronics)
E-Mon Corporation
FLIR Systems Inc.
Fluke Corporation
Klein Tools
Simpson Electric Company

MOTOR CONTROL & DISTRIBUTION EQUIPMENT

ASCO (Emerson)
Baldor Electric Company
Bodine Electric Co.
Emerson
Erickson Electrical Equipment Co.
Furnas Electric Co.
(Siemens)
Hubbell Industrial Controls
IDEC Corporation
ITE Electrical Products
(Siemens)
Magnetek
Milbank Mfg. Company
Power Distribution Equipment (PDE)
Rees, Inc.
Siemens Industry
Square D (Schneider)
Superior Electric

MOTORS, PARTS & ACCESSORIES

Baldor Electric Company
Bodine Electric Co.
Emerson
Leeson Electric Corporation (Regal)
Magnetek
SEW-Eurodrive
Siemens Industry
WEG

PIN & SLEEVE

Appleton (Emerson)
Hubbell Wiring Devices
Leviton Manufacturing Co.
Mennekes Electronics, Inc.

Pyle National (Amphenol)
Russellstoll (T&B)

POWER CONDITIONING

Acme Electric Corporation
SolaHD (Emerson)

POWER PROTECTION

Liebert
SolaHD (Emerson)

POWER SUPPLIES

IDEC Corporation
Siemens Industry
SolaHD (Emerson)
Weidmuller

PROGRAMMABLE LOGIC CONTROLLERS / PLC

Siemens Industry

PVC COATED CONDUIT

Calbond (Cal Pipe)
Ocal (Thomas & Betts)

PVC CONDUIT & FITTINGS

Cantex, Inc.
Carlson Electrical Products
(T&B)
Heritage Plastics
Ipx, Inc.

RACEWAY/DUCT

Hellerman Tyton
Hubbell Wiring Devices
Panduit Corporation
Thomas & Betts (T&B)
Wiremold Company

RACKS & CABINETS

B-Line (Eaton)
Hoffman (Pentair)
Hubbell Premise Wiring, Inc.

SAFETY

3M Company
Bacou-Dalloz (Honeywell)
Edge Eyewear
Fortress Interlocks
Kidde Safety

STEINER'S SELECT

Klein Tools
Magid Glove & Safety
Manufacturing
Oberon Company
Panduit Corporation
PIP-Protective Industrial
Products
Salisbury (Honeywell)

SENSORS

Banner Engineering
Siemens Industry
Square D (Schneider)
Telemecanique (Square D)
Turck

SIGNALING DEVICES & SMOKE DETECTORS

BRK Electronics
(First Alert)
Edwards Signaling
Faraday, Inc.
Federal Signal Corporation
Kidde/Fyrenetics
Maple Chase (Kidde)
STI Firestop
Square D (Schneider)
W.L. Jenkins Company

TASK LIGHTING

Banner Engineering

TERMINAL BLOCKS

Siemens Industry
Square D (Schneider)
Weidmuller

THERMAL IMAGING

FLIR Systems Inc.
Fluke Corporation
Ideal Industries, Inc.

TOOLS: HAND & POWER

Allen Mfg. Co. (Apex
Tool Group)
American Tool Co.
(Vise-Grip)
Apex Tool Works
Armstrong Tools, Inc.
(Apex Tool Group)
Channelock, Inc.

DeWalt (Black & Decker)
Eklind
Greenlee (Textron)
Ideal Industries, Inc.
Irwin Co. (American Tool)
Klein Tools
Lenox (American Saw
& Mfg.)
Lufkin Rule Co.
(Apex Tool Group)
Milwaukee Electric
Tool Corp.
Panduit Corporation
Southwire Company
(Maxis)
SK Tools

TRANSFORMERS & VOLTAGE REGULATORS

Acme Electric Corporation
Micron Industries Corp.
SL Waber (Tripplite)
Siemens Industry
Signal Transformer
(Bel Fuse)
SolaHD (Emerson)

UNINTERRUPTIBLE POWER SUPPLIES (UPS)

Eaton Powerware
Liebert (Vertiv)
Myers Power Products
SolaHD (Emerson)

VAULTS & ENCLOSURES

Christy Concrete Products
Hoffman (Pentair)
Quazite (Hubbell)

VALVES

ASCO (Emerson)
Numatics Inc. (ASCO)

VENDING

Cribmaster Inc.
GigaTrak

WARNING LABELS & SAFETY SIGNS

Brady Corporation
Panduit Corporation

WIRE & CABLE

Alpha Wire
Belden Inc.
Carol Cable
Cerro Wire & Cable
Cole Wire & Cable, Inc.
Consolidated Wire
General Cable
Hitachi Cable
Houston Wire
Okonite
Olflex Wire & Cable, Inc.
(Lapp USA, Inc.)
Omni Cable
Priority Wire & Cable
Prysmian Cable
Service Wire Company
Southwire Company
West Penn Wire

WIRELESS NETWORKS

Banner Engineering
Motorola, Inc.

WIREWAY & STRUT

B-Line (Eaton)
Hoffman (Pentair)
Kellems (Hubbell)
Panduit Corporation
Square D (Schneider)
Thomas & Betts (T&B)
Unistrut Corporation
(Atkore)
Wiremold Company

WIRING ACCESSORIES

Gleason Reel Corp.
Ideal Industries, Inc.
Panduit Corporation
Thomas & Betts (T&B)
W. H. Brady Company

WIRING DEVICES

Amphenol (Pyle National)
Appleton (Emerson)
Brad (Molex)
Contact Electronics, Inc.
(Lapp USA, Inc.)
Cooper Wiring Devices
(Eaton)
Custom Connector Corp.
Harting USA
Hubbell Wiring Devices
Leviton Manufacturing Co.
Linemaster Switch Corp.
McGill Electrical
(Emerson)
Meltric Corp.
Mennekes
MicroSwitch (Honeywell)
Mulberry Metal Products,
Inc.
Pass & Seymour, Inc.
(Legrand)
Rees, Inc.
Russellstoll (T&B)
SL Waber (Tripplite)
Thomas & Betts (T&B)
Wiremold Company
Woodhead (Molex)

STEINER STOCKS THE WORLD'S LEADING BRANDS



STEINER

We are continually adding brands. Please go to steinerelectric.com to see the latest.

STEINER®



Helping you be the best for your customer for over 100 years.™

CHICAGO

2415 West 19th Street
Chicago, IL 60608
Phone: (312) 421-7220
Fax: (312) 666-5027

2225 W. Hubbard Street
Chicago, IL 60612
Phone: (312) 421-7220
Fax: (312) 666-5027

CRYSTAL LAKE

200 S. Virginia Road
Crystal Lake, IL 60014
Phone: (815) 261-3400
Fax: (815) 459-1500

ELK GROVE

Corporate Headquarters
1250 Touhy Avenue
Elk Grove Village, IL 60007
Phone: (847) 228-0400
Fax: (847) 228-1352

GURNEE

4210 Grove Avenue
Gurnee, IL 60031
Phone: (847) 623-2028
Fax: (847) 623-7007

HOBART, INDIANA

1600 Northwind Parkway
Hobart, IN 46342
Phone: (219) 947-8800
Fax: (219) 947-2300

ROCKFORD

6900 Rock Valley Parkway
Loves Park, IL 61111
Phone: (815) 633-2900
Fax: (815) 282-2922

ST. CHARLES

3755 Swenson Avenue
St. Charles, IL 60174
Phone: (630) 377-6600
Fax: (630) 377-7952

TINLEY PARK

18600 Northstar Court
Tinley Park, IL 60487
Phone: (708) 802-6400
Fax: (708) 429-0300