



HOFFMAN



WIRING TROUGHS

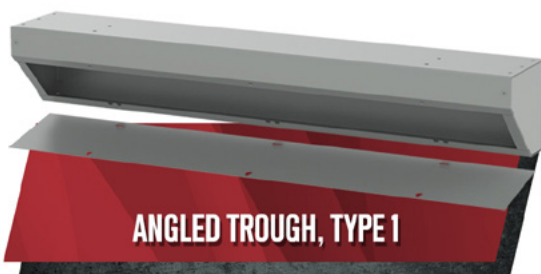
Flexibility to protect cable distribution, junctions and terminations

Industrial wiring troughs from nVent Hoffman offer flexibility to protect cable distribution, junctions and terminations for indoor and outdoor applications. Available in various lengths and materials with screw-covers, hinged-covers, or fiberglass hinged-covers

manufactured to withstand dirty, moist or corrosive environments on select options. Consult your Steiner nVent Hoffman application specialist for assistance on determining the correct wiring troughs to meet your environmental requirements.

nVent Hoffman Wiring Trough Features

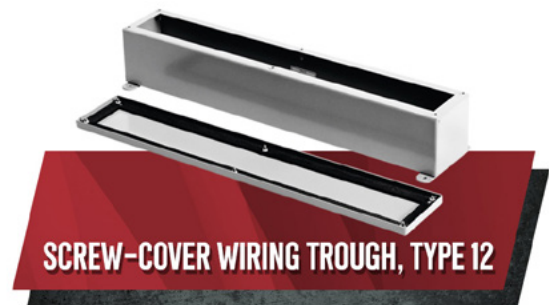
- Protects cable distribution, junctions and terminations
- Offers flexibility in a variety of indoor and outdoor, commercial and industrial applications
- Available in various lengths and materials
- Options for dirty, moist or corrosive environments



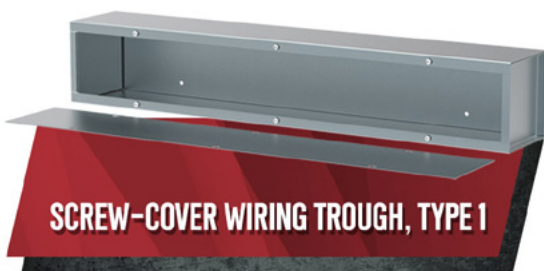
ANGLED TROUGH, TYPE 1



ECONOTROUGH GALVANIZED, TYPE 3R



SCREW-COVER WIRING TROUGH, TYPE 12



SCREW-COVER WIRING TROUGH, TYPE 1

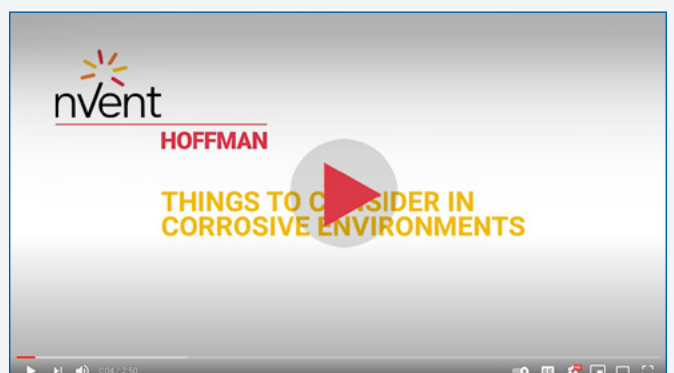


HINGED-COVER WIRING TROUGH, TYPE 12

[Shop Wiring Troughs](#)

Considerations for Corrosive Environments

Corrosion has a high impact on overall cost of ownership. In the water and waste water sector alone, corrosion incurs costs of \$36 billion annually. Consider the elements around the application's design. Corrosive environments can cause issues such as pinhole leaks in the corners of enclosures, corroding of hinges, or tea staining which leaves brown splotchy stains on stainless steel surfaces. Watch the video for more details.



For more info about nVent Hoffman Wiring Troughs call **1-800-STEINER** (783-4637) to speak with a Steiner application specialist.

STEINER

www.steinerelectric.com